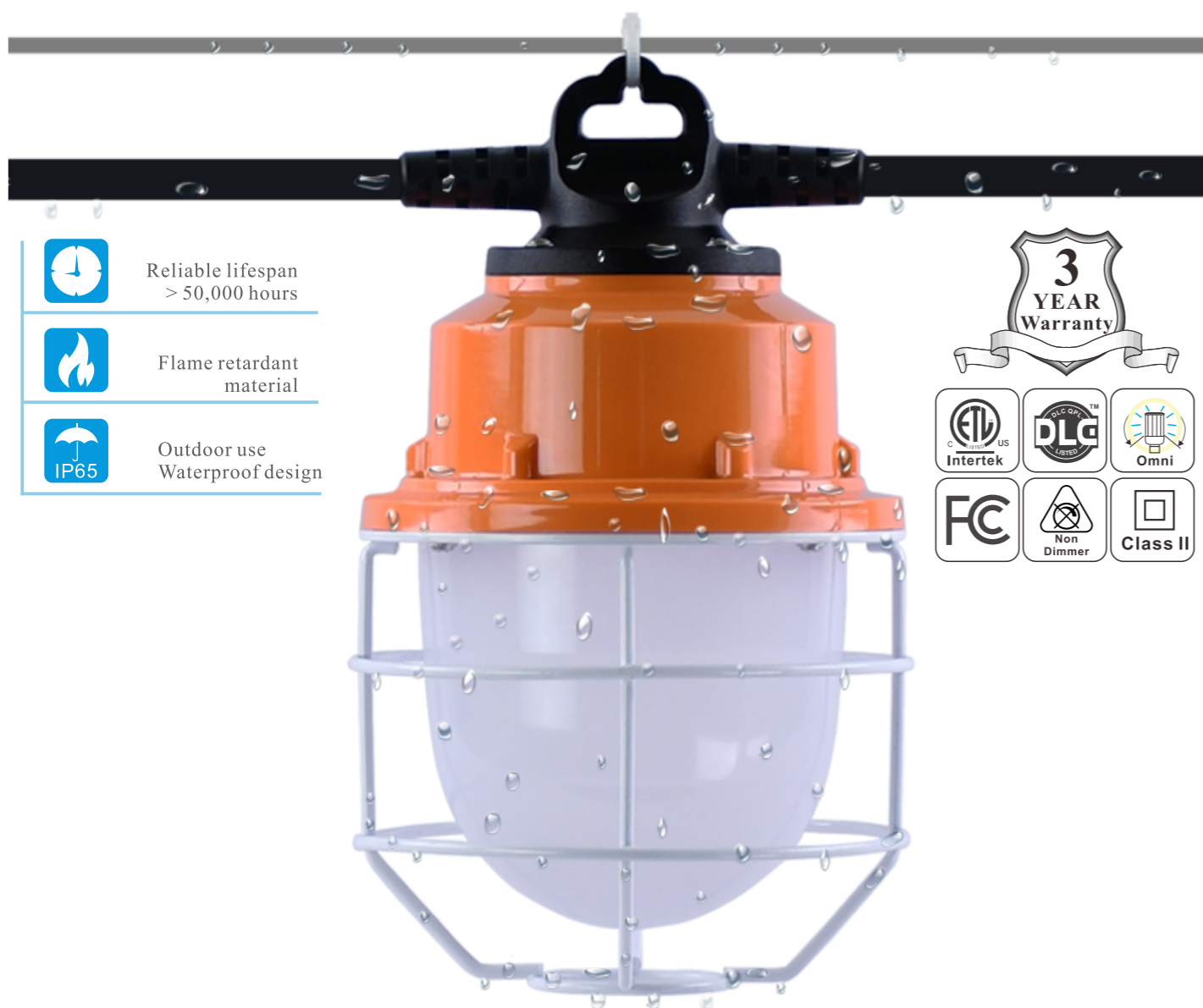
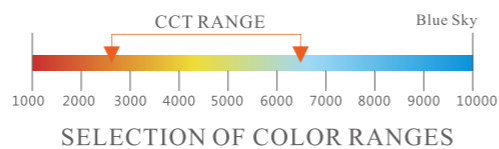




LED STRING LAMP

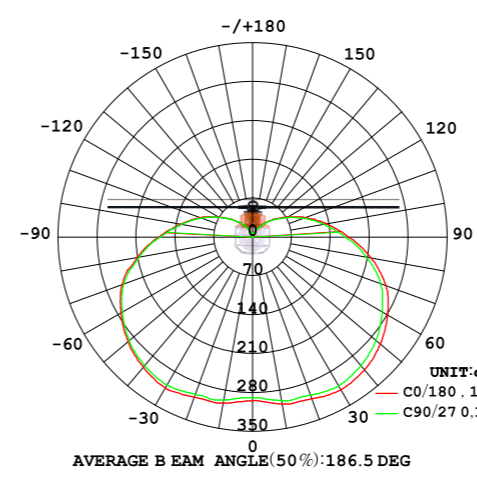
High volt/Low volt/Connectable
5*20W/10*20W



- Reliable lifespan > 50,000 hours
- Flame retardant material
- Outdoor use Waterproof design

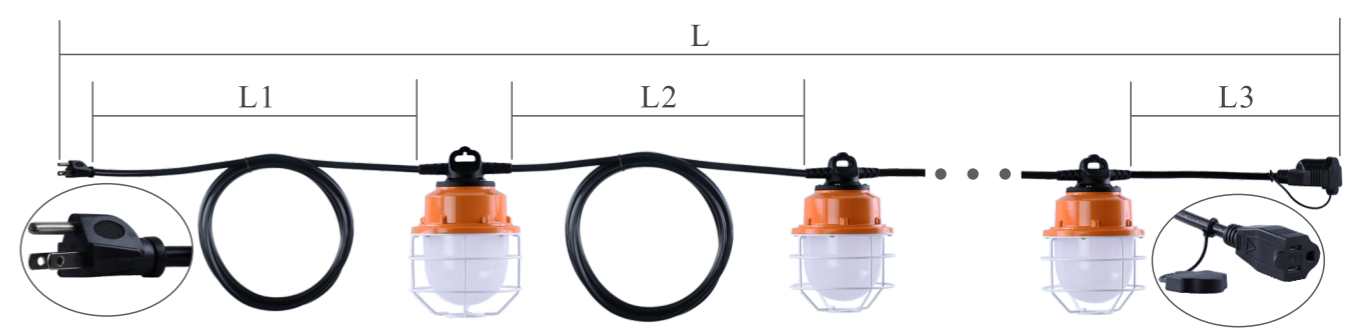
3 YEAR Warranty

Specifications



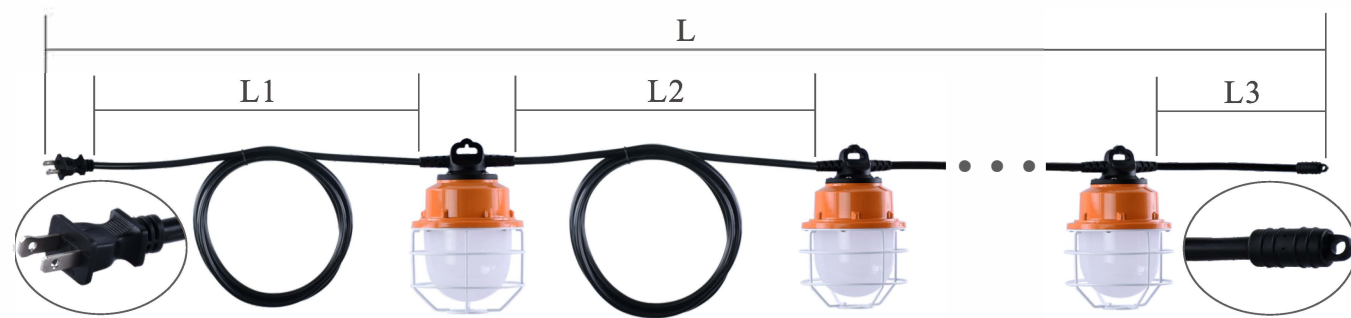
AC Input	100~277VAC 50/60Hz
Wattage	20W±10%
PF	≥0.9
THD	<20%
LED Qty	72 PCS SMD2835
CRI	≥80
Lumen±5%	2,100 lm
CCT.	2700-6500K
Dimensions	ø120*188mm ø4.72"x4.70"

CRI ≥80 **ta** -29-50°C / -20-122°F **PF ≥0.9** **THD <20%**

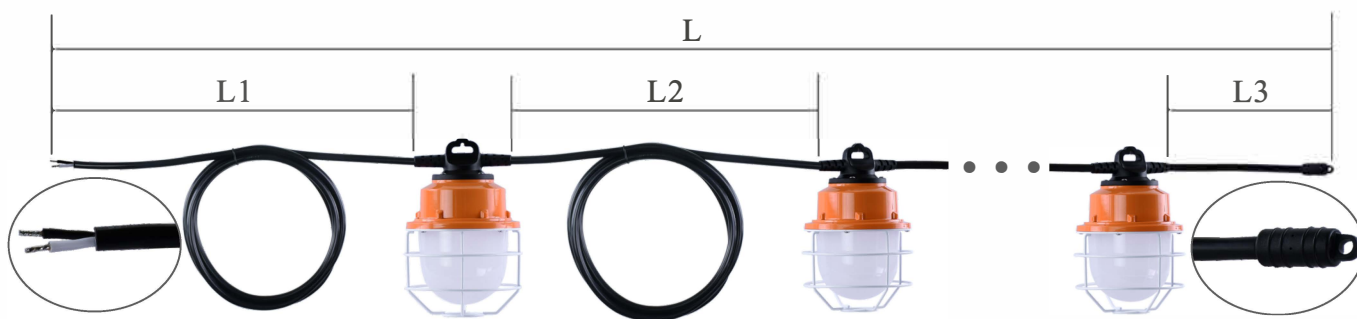


Model No.	Input	Wattage	L1	L2	L3	L	Weight	Carton size	Per Carton
HA11-5*20W-M-xxK-3P	100~277VAC 50/60Hz	100W±10%	3M 10ft	3M 10ft	0.2M 8"	15.78M 51.77ft	NW 4.90kg 10.80 lbs	700*180*H215mm 27.56"x7.09"x8.47"	1pc GW5.65kg/12.46 lbs
HA11-10*20W-M-xxK-3P	100~277VAC 50/60Hz	200W±10%	3M 10ft	3M 10ft	0.2M 8"	31.30M 102.69ft	NW 9.75kg 21.50 lbs	700*310*H215mm 27.56"x12.21"x8.47"	1pc GW10.95kg/24.14 lbs

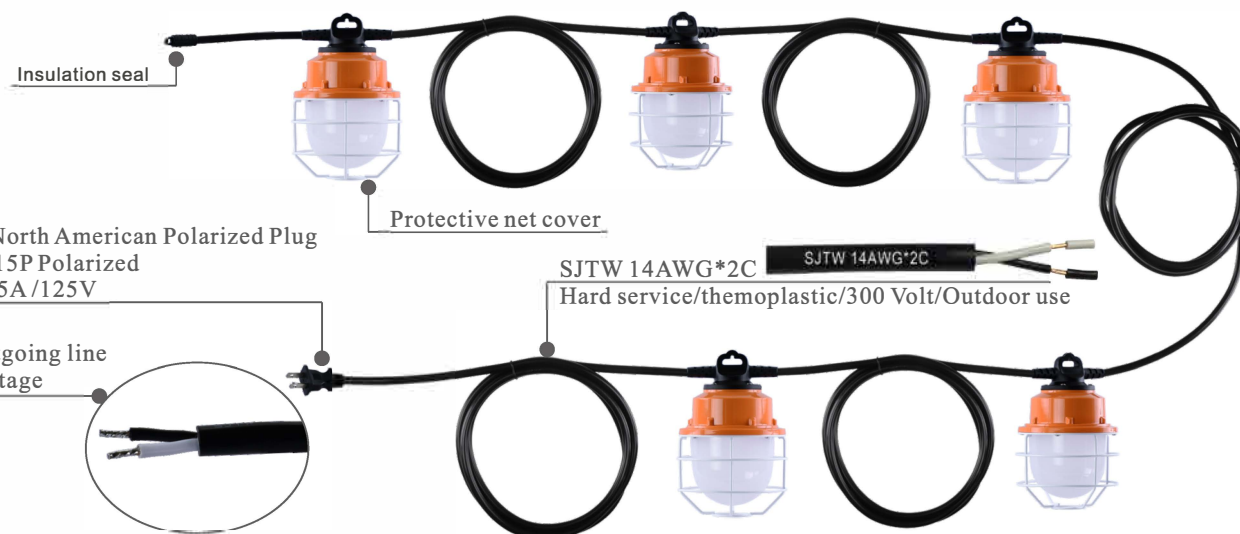
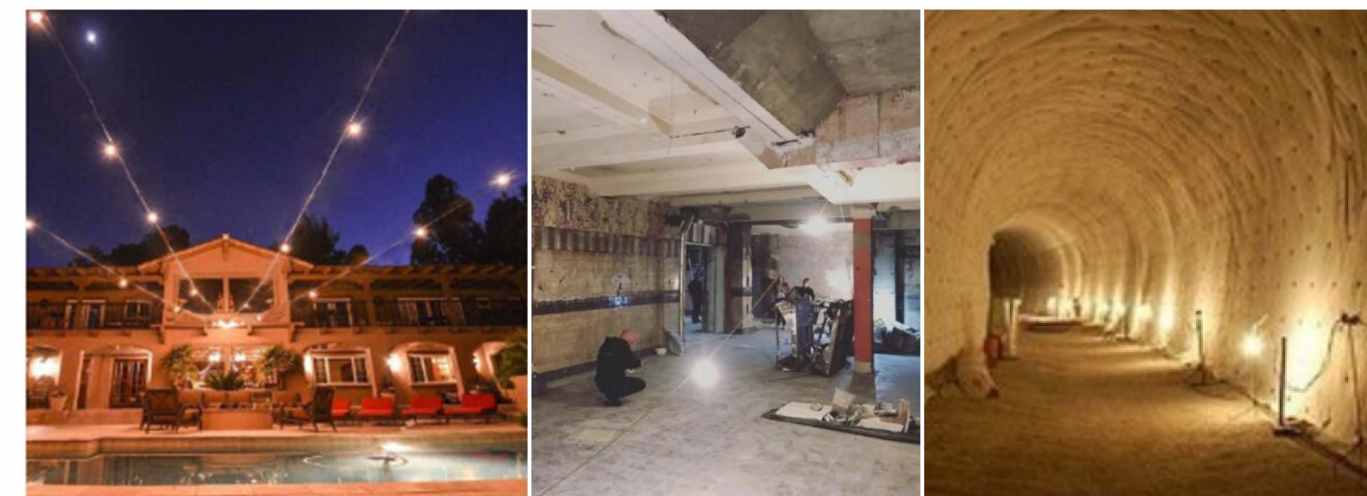
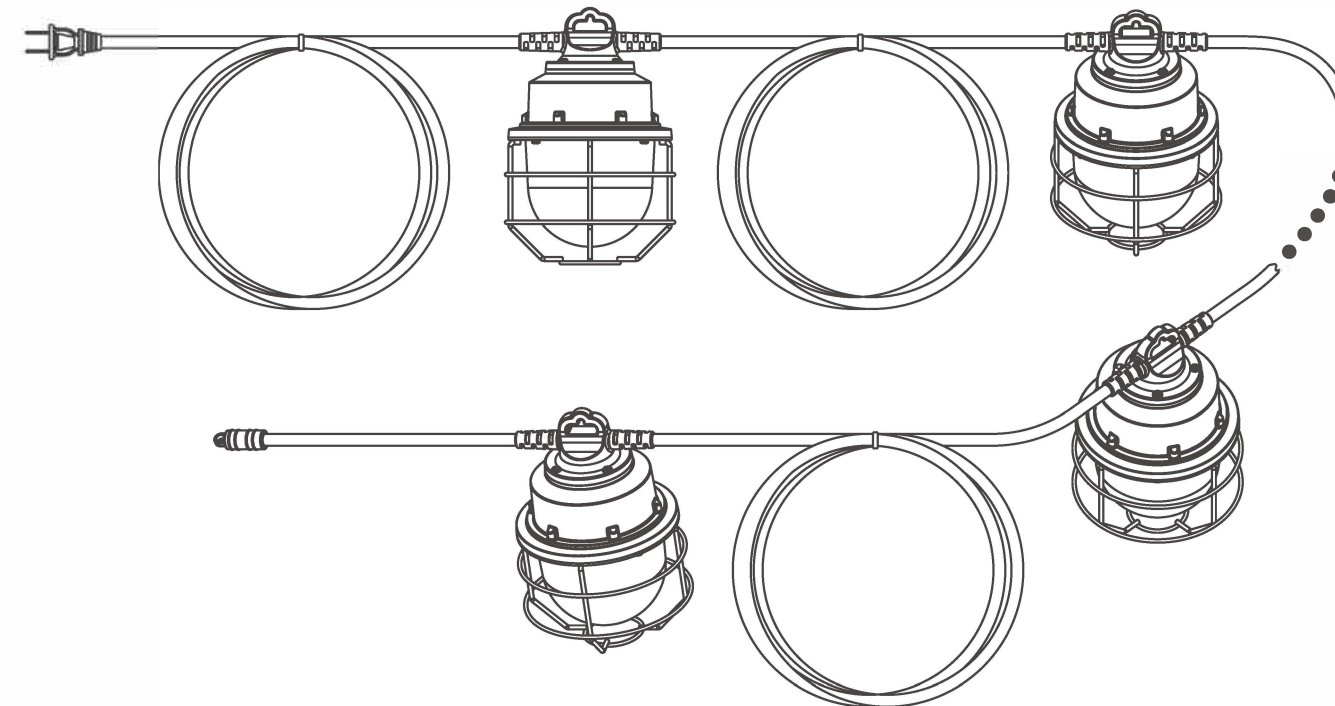




Model No.	Input	Wattage	L1	L2	L3	L	Weight	Carton size	Per Carton
HA11-5*20W-M-xxK	100~277VAC 50/60Hz	100W±10%	3M 10ft	3M 10ft	0.2M 8"	15.78M 51.77ft	NW 4.60kg 10.14 lbs	700*180*H215mm 27.56"x7.09"x8.47"	1pc GW5.35kg/11.80 lbs
HA11-10*20W-M-xxK	100~277VAC 50/60Hz	200W±10%	3M 10ft	3M 10ft	0.2M 8"	31.30M 102.69ft	NW 9.15kg 20.17 lbs	700*310*H215mm 27.56"x12.21"x8.47"	1pc GW10.35kg/22.82 lbs



Model No.	Input	Wattage	L1	L2	L3	L	Weight	Carton size	Per Carton
HA11-5*20W-X-xxK	24V AC/DC	100W±10%	3M 10ft	3M 10ft	0.2M 8"	15.78M 51.77ft	NW 4.59kg 10.12 lbs	700*180*H215mm 27.56"x7.09"x8.47"	1pc GW5.34kg/11.77 lbs



CAUTIONS

- Suitable for damp locations.
- Risk of electric shock. Do not expose the plug to water.
- Do not use with dimmers.
- Don't take apart the lamps without our permit.

- '5*20W' stands for 5 pcs 20W lamp; '10*20W' stands for 10 pcs 20W lamp.
- 'M' stands for Input 100~277V AC; 'X' stands for Input Low Voltage 24V.
- 'xxK' stands for color temperature, Example: '50K' stands for 5000K(Kelvin Temperatures may vary +/- 250K).
- '3P' stands for 3-Plug and Connectable.
- 'L1''L2''L3' Custom length of Please inquire. Extending the power cord may increase the size of the package.
- DLC not available for all CCT. Please inquire.

ROCKLAND LED LLC.

425 Western Highway, Tappan NY 10983 (845) 300-9399 billn@rocklandled.com www.rocklandled.com